

# *Bring The Brightness*

*PRODUCT LINE-UP for electronically controlled  
two-stroke diesel engine from MAN Diesel & Turbo*



**Nabtesco**  
Marine Control Systems Company

*Create  
a wave of the future  
yet unseen in the world.*



**Application of Unfailing Technology  
to Respond to Wide-ranging  
Needs from Coastal Shipping  
to Large Crude Oil Carriers**

Marine vessels equipment business offers various marine control systems used to ensure navigational safety and promote automation. Since Nabtesco released PMS in 1968, successfully developed "Relay type", "Electronics type", "micro computer type", and got great support from customer. Additionally, with the gradual introduction of restrictions on NOx emissions, we are working to develop environmentally friendly technologies by quickly responding to the demand for control systems for electronically-controlled diesel engines and hydraulic equipment that are expected to spread rapidly.



**Creative skill made in Nabtesco**

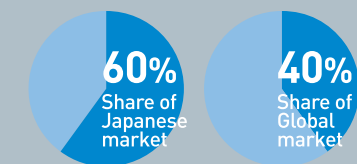
*The Nabtesco Group, with our unique motion control technology, will provide safety, comfort and a sense of security in daily lives as well as any form of transportation.*



**Market share of Nabtesco**

Nabtesco has about a 60% share of the Japanese market and a 40% share of the global market for remote control systems for 2-stroke marine diesel engines. It has set up plants in China and Korea in addition to the three main bases in Japan, Singapore and the Netherlands, thus expanding the global service network and providing finely-tuned after-sales services.

Remote control system  
for marine vessels



# Nabtesco's Key Components for electronically controlled two-stroke diesel engine

Nabtesco can supply essential key components for MAN-ME engine. We greatly contribute to environmental protection in the ocean.

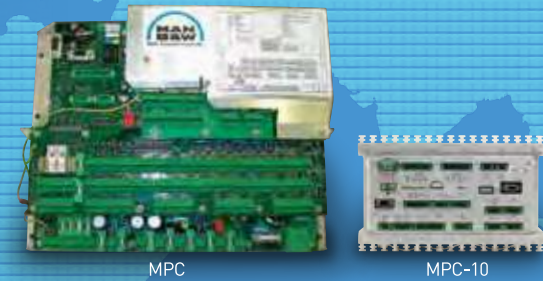
## Nabtesco Core Technology ME-Engine

- Electric Control
- Hydraulic Control
- Pneumatic Control
- Sensing Technology



### M-800-V Bridge Maneuvering System

One of our main products, Bridge Maneuvering System. M-800-V is the latest model which is improved an operability and network technology from previous model.



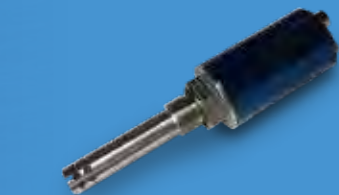
### MPC ( Multi-Purpose Controller )

MPC which controls the whole ME type engine. It is composed of EICU/ECU/ACU/CCU.



### Inductive Sensor

This sensor measure position of fuel plunger and exhaust valve, which is part of electronically controlled engine.

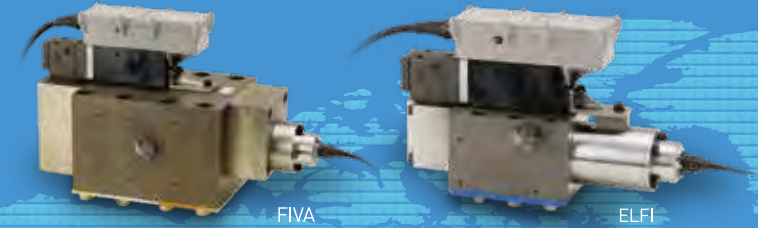
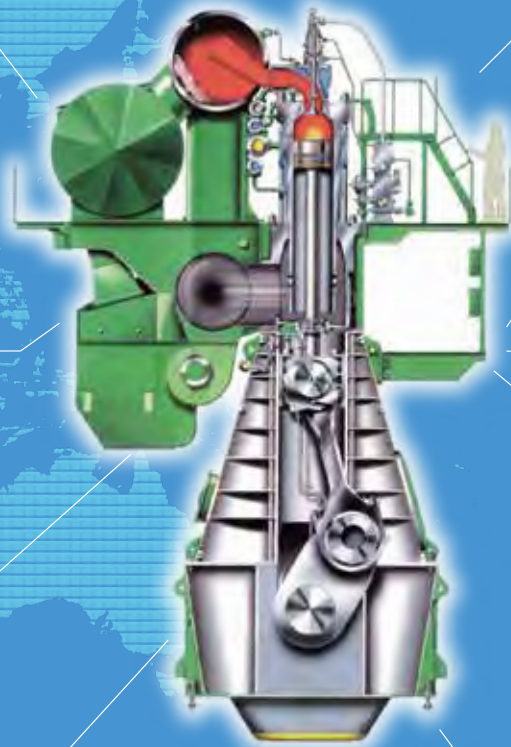


### WIO ( Water In Oil )



### BWM ( Bearing Wearing Monitor )

## Electronically controlled two-stroke diesel engine



### FIVA / ELFI / ELVA

FIVA is an important product which control pressure, flow volume and direction of hydraulic oil, and change fuel injection and exhaust valve actuation flexibly. ELFI is used in ME-B type engine and control timing of fuel injection only.



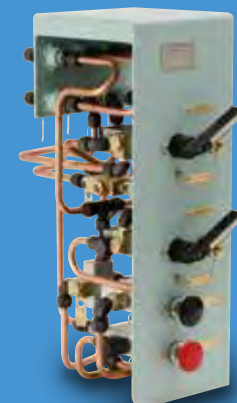
### EC-MOP



### TSA ( Tacho Signal Amplifier )

### Power Supply Unit

Power supply unit which supply power source to MPC for ME-C,ME-B, Engine.



PMS



LOP

### Local Operation

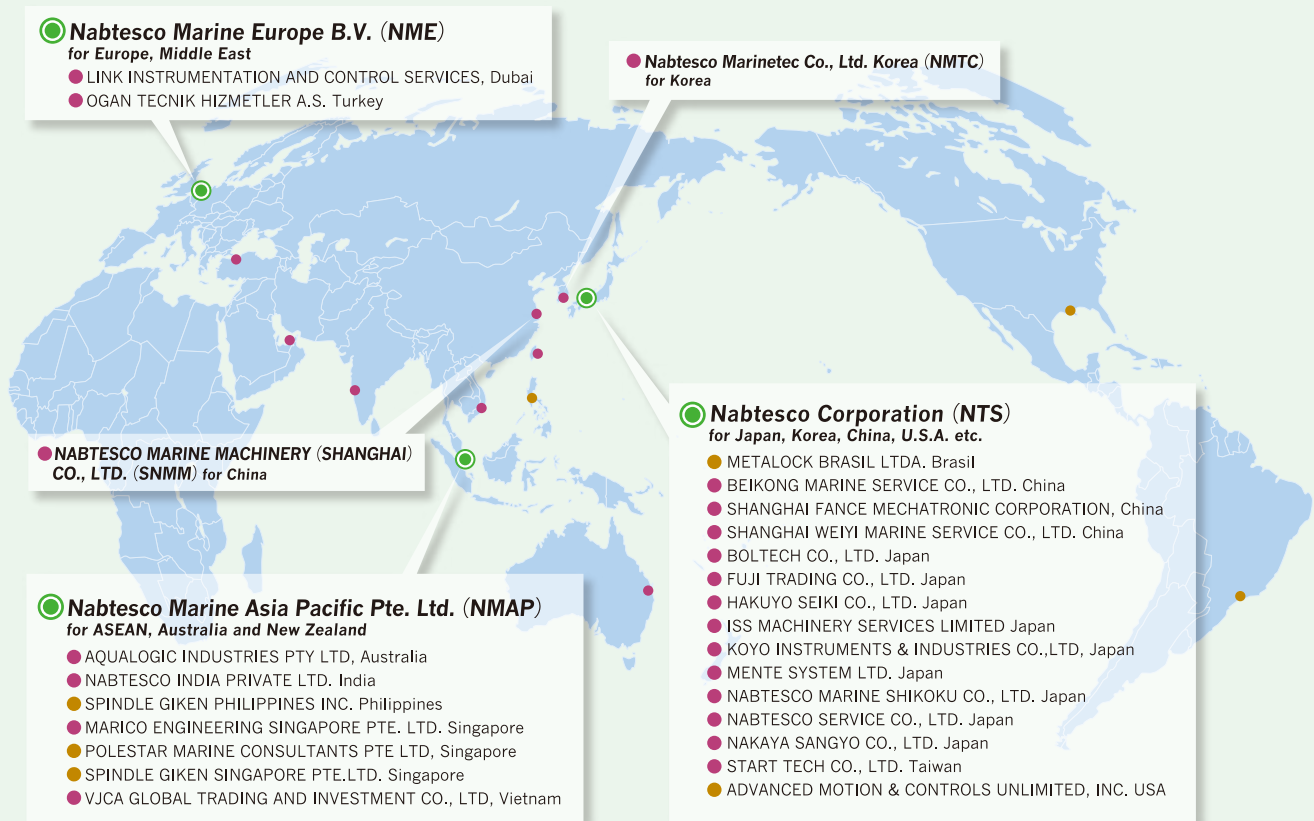
### LOP ( Local Operating Panel )

### PMS ( Pneumatic Maneuvering System )

In ME-C type engine, LOP is used for local operating. Also in ME-B type engine, as well as MC-C type, PMS is used to control engine. We, Nabtesco hold the pneumatic technology since 1968, are able to supply various valves.

# Nabtesco GLOBAL SERVICE NETWORK

- Parts & Personnel service center
- Parts & Personnel service station
- Personnel service station



To the users of **Nabtesco** system,  
we are always ready to answer swiftly your requests for after-sales service on **Nabtesco** system.  
Please call the following **Nabtesco** Service Centers.  
Particularly our service center can accept calls 24 hours during whole year.

## Nabtesco

### ● JAPAN

#### Nabtesco Corporation Marine Control Systems Company

##### ● Kobe Office

1617-1, Fukuyoshi-dai, 1-chome, Nishi-ku, Kobe 651-2413, Japan  
Phone : +81 78 967 5361 FAX : +81 78 967 5362  
e-mail : newbuilding@nabtesco.com

##### ● Tokyo Office

JA Kyosai Bldg., 7-9, Hirakawa-cho 2-chome, Chiyoda-ku, Tokyo 102-0093, Japan  
Phone : +81 3 5213 1155 FAX : +81 3 5213 1174  
e-mail : newbuilding@nabtesco.com

### ● KOREA

#### Nabtesco Marinetec Co., Ltd.

29-1 Gupyoung-ro, Saha-gu, Busan, 49454, Korea  
Phone : +82 51 264 9380  
FAX : +82 51 264 9320  
e-mail : nmctc0420@nmctc.co.kr

### ● CHINA

#### NABTESCO MARINE MACHINERY (SHANGHAI) CO., LTD. (SNMM)

HP : <http://www.snmcs.cn/>

##### ● Head office / Factory

Building No.5, Lane777, YuanDong Road,  
Fengxian County, Shanghai, 201401, China  
Phone : +86 21 6710 1551  
FAX : +86 21 6710 1552

##### ● Sales / Service

Room 1703, Yue Xiu Tower, No.388 FuShan Road,  
PuDong New Area, Shanghai 200122, China  
Phone : +86 21 5852 0363  
FAX : +86 21 5852 0348

## SERVICE CENTER

### ● JAPAN Nabtesco Corporation Marine Control Systems Company

1617-1, Fukuyoshi-dai, 1-chome, Nishi-ku, Kobe 651-2413, Japan Phone : +81 78 967 1404 FAX: +81 78 967 4891  
e-mail : mr\_service@nabtesco.com

### ● THE NETHERLANDS Nabtesco Marine Europe B.V.

Touwslagerstraat 17, 2984 AW Ridderkerk, The Netherlands Phone : +31 180 530 590 FAX : +31 180 530 591  
e-mail : technical@nabtesco.nl

### ● SINGAPORE Nabtesco Marine Asia Pacific Pte. Ltd.

401 Common Wealth Drive #05-04 Haw Par Technocentre Singapore, 149598 Phone : +65 6225 6559 FAX : +65 6225 7393  
e-mail : nmap@nabtesco.com.sg

